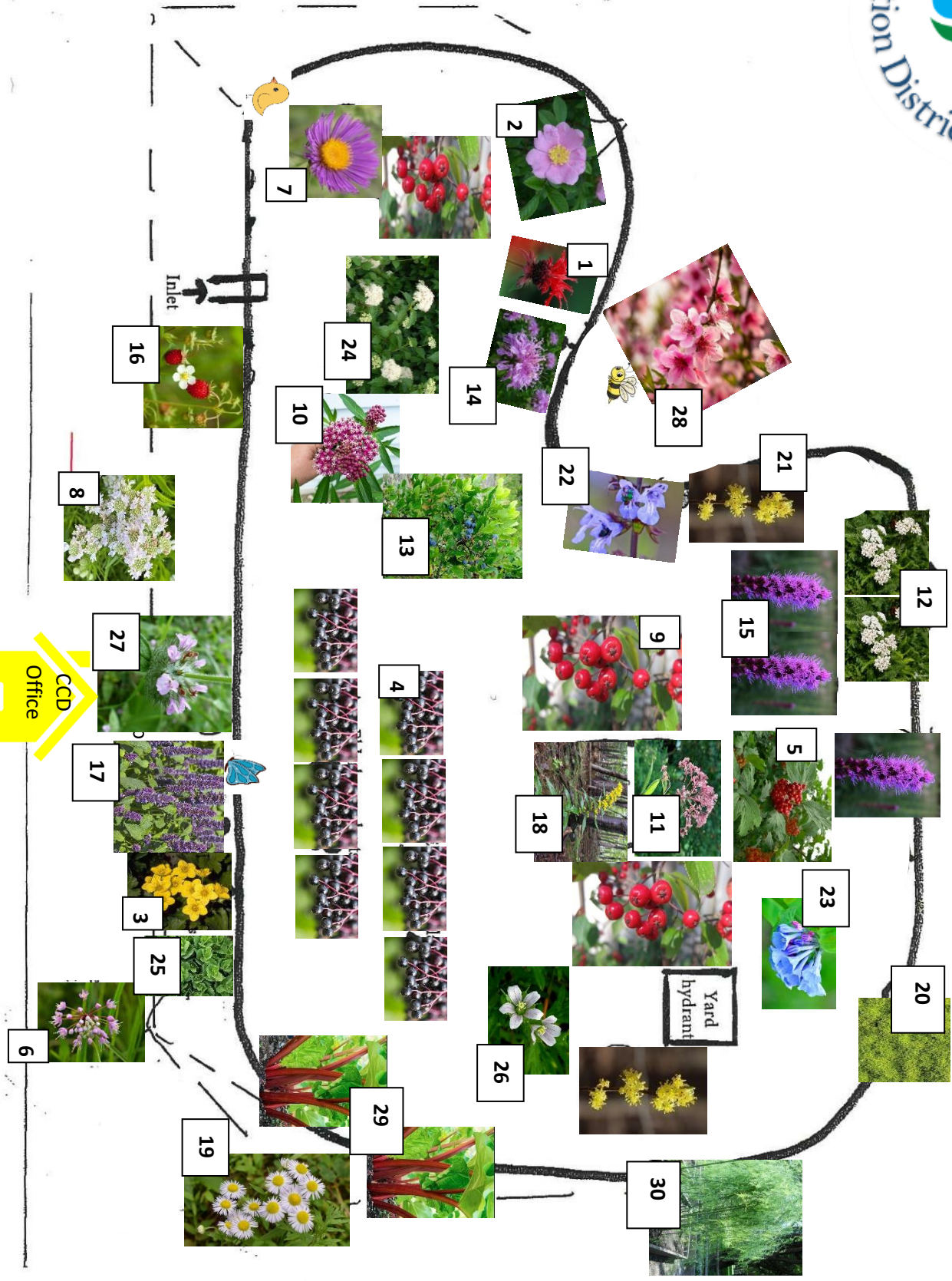
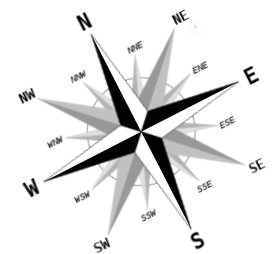


Large Rain Garden

Last Updated: June 2023



CCD
Office

Yard
hydrant

Inlet

KEY	
	Sunny Moist Sites
	Sunny Dry Sites
	Shady Moist Sites
	Shady Dry Sites

Large Rain Garden

NATIVE					
	Common Name	Scientific Name	Bloom Period/Color	Size	Notes
1	Beebalm	<i>Monarda didyma</i>	Jul-Aug / Red	2-5'	Nectar for hummingbirds & butterflies, aromatic
2	Swamp Rose	<i>Rosa palustris</i>	June-July / Light pink	1-7'	Red rose hips, adaptable, attracts birds
3	Appalachian Barren Strawberry	<i>Waldsteinia fragarioides</i>	April-June/ Yellow	1-8"	Fruit not edible, adaptable groundcover, drought-tolerant
4	American Elderberry	<i>Sambucus canadensis</i>	June-July / White	3-12'	Purple/black berries, attract birds & other pollinators
5	Highbush Cranberry	<i>Viburnum trilobum</i>	May-July / White	6-15'	Red berries and foliage in the fall
6	Nodding Onion	<i>Allium cernuum</i>	June-Oct / White-Pink	1-2'	Attracts butterflies, hummingbirds, and other wildlife
7	New England Aster	<i>Symphotrichum novae-angliae</i>	Aug-Oct / Purple	2-6'	Tolerates drier soil
8	Mountain Mint	<i>Pycnanthemum virginianum</i>	July-Aug / White	15-36"	Aromatic, support butterflies, bees and other species
9	Red Chokeberry	<i>Aronia arbutifolia</i>	March-May / White	5-10'	Red fruits & fall color, can be pruned as a hedge
10	Swamp Milkweed	<i>Asclepias incarnata</i>	July/Aug / Rose	2-6'	Lovely flowers, food for monarch butterfly caterpillars
11	Joe-pye-weed	<i>Eutrochium purpureum</i>	Aug-Sept/ Purple	3-10'	Nectar source draws many pollinators

12	Common Yarrow	<i>Achillea millefolium</i>	July-Sept / White	1-3'	Drought tolerant, aromatic
13	Highbush Blueberry	<i>Vaccinium corymbosum</i>	May-June / White-Pink	2-12'	Highbush & Lowbush need acidic soils, edible fruit
14	Wild Bergamot	<i>Monarda fistulosa</i>	July/Aug / Pink-violet	2-5'	Nectar for hummingbirds & butterflies, aromatic
15	Dense Blazing Star	<i>Liatris spicata</i>	July-Sept / Purple	2-6'	Showy flower spikes
16	Wild Strawberry	<i>Fragaria virginiana</i>	April-June/ White	1-4"	Attract butterflies and wildlife, edible red fruit
17	Anise Hyssop	<i>Agastache foeniculum</i>	June-Sept / Purple	1-3'	Attracts birds and pollinators, aromatic licorice scent
18	Wreath Goldenrod	<i>Solidago caesia</i>	Sept-Oct / Yellow	1-4'	Drought tolerant once established, many pollinators
19	Daisy Fleabane	<i>Erigeron annuus</i>	June-Oct / White-Yellow	1-5'	Said that dried flowers deter fleas
20	Moss	<i>Bryophytes</i>	N/A	1-2"	Store and filter nutrients and water
21	Spicebush	<i>Lindera benzoin</i>	March-May / Yellow	6-12'	Aromatic, red fruits
22	Lyreleaf sage	<i>Salvia lyrata</i>	March-June / Pale-blue or violet	1-2'	Nectar for hummingbirds & butterflies, adaptable

23	Virginia Bluebells	<i>Mertensia virginica</i>	March-June / Blue	1-2.5'	Early, long-blooming, supports early pollinators
24	Arrow-wood Viburnum	<i>Viburnum dentatum</i>	May-June / White	3-15'	Very variable and adaptable species
25	Woodland Stonecrop	<i>Sedum ternatum</i>	April-June / Greenish White	<1'	Groundcover, adaptable to sun
26	Carolina Cranesbill	<i>Geranium carolinianum</i>	March-July / White-Pink	1-2'	Attracts pollinators and birds
27	Wild Basil	<i>Clinopodium vulgare</i>	July-August / Purple	8-24"	In the mint family
	NON-NATIVE				
	Common Name	Scientific Name	Bloom Period/Color	Size	Notes
28	Peach Tree	<i>Prunus persica</i>	April / Pink	4-6'	Aromatic, attracts birds, native to China
29	Garden Rhubarb	<i>Rhuem rhabarbarum</i>	Spring/ White	30"-5'	Edible red stems, tart taste, native to Siberia
30	Asparagus	<i>Asparagus officinalis</i>	White	3-4'	Edible shoots April-May, native to Europe/Asia, red berries