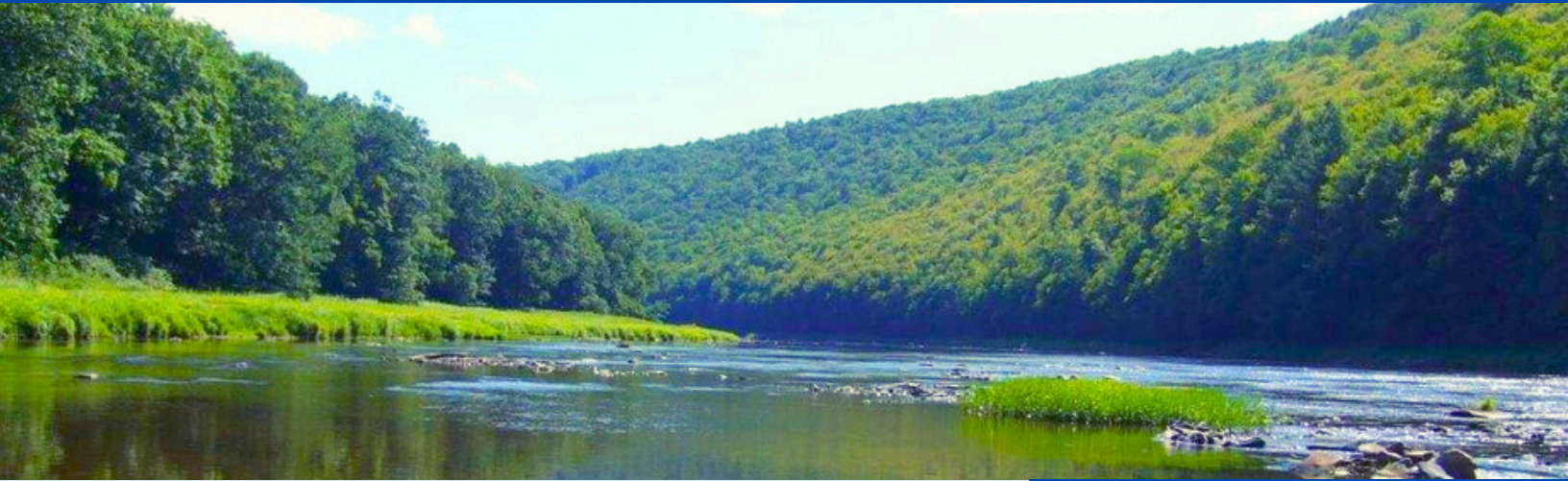


WINTER 2025/2026 E-BLAST



CLARION CONSERVATION DISTRICT



Wishing you a joyful winter season!

by Hannah Bequeath, Education/Outreach Coordinator



Join the Clarion Conservation District (CCD) in reflecting on the past year of conservation work (*see 2025 District Highlights pages*). We could not have accomplished all that we have without all of our wonderful partners (*see Thank You to Partners page for a list of partners*).

Expect to see many exciting conservation projects throughout the county in 2026 as ACAP projects are constructed on local farms, DGLVR projects are installed, and more! Be sure to check out the upcoming events page featuring **annual events**: the Farmer Breakfast, Forest Landowner Conference, and Grazing Conference; as well as **new events** being offered in 2026 through CCD's recently awarded 2025 DEP Environmental Education Grant: Winter Nature Journaling, Phenology Webinar, Soil Health & Compost Workshop, Forestry Walk, Rain Garden/Riparian Buffer Workshop, and a Water Workshop.

The Clarion Conservation District wishes you a Happy New Year! May you "imitate a winterberry's lot," finding joy amidst the bleakness of winter (*see featured species page*). If you can't find it, BE the joy.

CONTENTS

- Recap of Fall 2025 Events
- Agriculture Updates & Integrated Pest Management (IPM) Article
- DGLVR Updates
- E&S Updates
- Watershed Updates
- Featured Species: Winterberry (*Ilex verticillata*)
- 2025 District Highlights: The Year in Review & Thank You to Partners
- Upcoming Events

RECAP OF FALL 2025 EVENTS

by Hannah Bequeath, Education/Outreach Coordinator

September- A **Rain Garden Work Day** was held (see photo on last page). The Clarion Conservation District (CCD) partnered with PennWest Clarion University students and professor, Dr. Andy Turner, to hold a **Fall Litter Clean-up** (pictured right) open to the public alongside roads that go through State Game Lands 72 (Clarion, PA) to celebrate National Public Lands day.

October- The **4th Annual Fun on the Farm** educational program series was held (see photos on Ag Updates page). CCD held a **Noticing Nature: Nature Journaling** workshop (pictured right) for adults at the Riverfront Park in East Brady; the first of many programs being offered through a received DEP Environmental Education grant. CCD was a guest speaker at **Redbank Valley Intermediate Schools' Fall Fest** and provided a station on our state mammal, the **White-tailed Deer**. PennWest Clarion University students joined CCD's Dirt, Gravel, and Low Volume Road (DGLVR) Technician and Watershed Specialist for a **Long-pro Demonstration** for part of their lab experience and engaged in conversation regarding real-world applications such as road conservation practices. CCD held a **Creepy Campfire** (pictured right) program featuring bats, toads, spiders, and spooky sounds. Due to inclement weather, the program was held indoors, but it was still a fun and spooky night debunking common misconceptions about these interesting creatures.

November- The Clarion Conservation District held an interactive webinar program featuring **Wild Turkeys** - just in time for participants to learn interesting facts to share on Thanksgiving! A recording of the webinar can be found at www.clarionconservation.com/webinar-recordings.

December - CCD partnered with the Jefferson County Conservation District to offer a **Winter Birds** program for the entire Clarion-Limestone Elementary School (~320 students).



Above: The Clarion Conservation District, PennWest Clarion University students, and community members picked up litter alongside roads in State Game Lands 72 (Clarion, PA) for National Public Lands Day.



Above: Adults gathered at Riverfront Park in East Brady, PA for a nature journaling workshop and introduction to identification methods and citizen science data collection tools.



Above: Despite the rainy weather, the Creepy Campfire program continued to be held indoors at the CCD Office (Clarion, PA) and all had a fun night of learning about nature and debunking common fears.

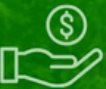
Agriculture Updates

by Hannah Bequeath, Agriculture Conservation Technician (ACT)



AGRICULTURE CONSERVATION ASSISTANCE PROGRAM (ACAP)

Are nutrients and/or soil from your farm going into nearby waterways?



Funding is available to help!



Grazing Plans, Livestock Stream Crossings, Cover Crops, Riparian Buffers, and more!

ACAP is a cost-share program that provides financial and technical assistance for the implementation of best management practices (BMPs) on agricultural operations within the Commonwealth to reduce nutrient loading and soil erosion impacts to local streams and rivers.

Applications will be due Spring 2026 for the next round of funding.
Pre-application site visits are required - schedule a visit today!

For more information go to clarionconservation.com/agriculture.
To schedule a pre-application site visit, contact Matt at 814-393-6018 (office), 814-221-1941 (cell), or mkerrccd@gmail.com.

28th Annual



Save the Date:

March 11th & 12th, 2026

Trinity Point Church, Clarion, PA

Register by March 5th, 2026.

Go to www.westernpagrazing.com for more info!

Save the Date:

5th Annual Farmer's Breakfast
January 30, 2025 | Clarion, PA

7:00am - 9:30am

Optional: Bookkeeping Basics for Farmers Workshop
9:30am - 10:30am

Register by Jan. 20th

at www.clarionconservation.com/events or contact Hannah at hbequeathccd@gmail.com or 814-393-6147.



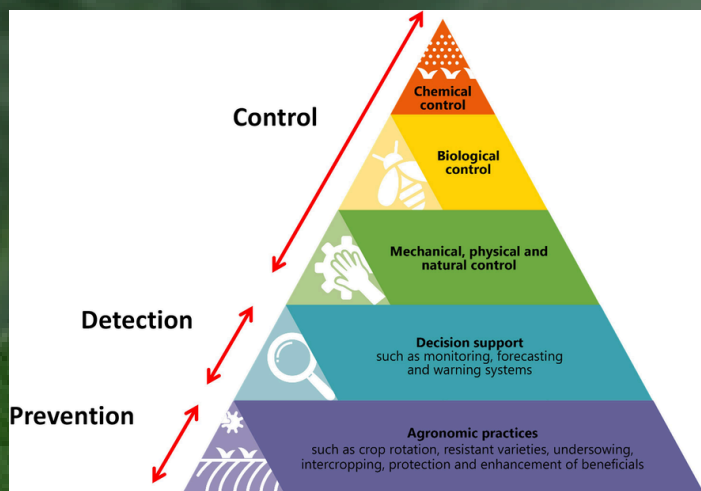
Agriculture Conservation Assistance Program (ACAP) Time-line for Clarion County



For more info on ACAP, visit www.agriculture.pa.gov/Plants_Land_Water/StateConservationCommission/ACAP/Pages/default.aspx

Integrated Pest Management (IPM)

by Hannah Bequeath, Agriculture Conservation Technician (ACT)



Integrated Pest Management (IPM) is a science-based, sustainable approach to managing pests that prioritizes **prevention** and involves monitoring and identifying pests and their damage to determine if control is needed, and if so, **using the least toxic, most effective methods** with *strategic* chemical control being the last resort.

For more info on IPM in Pennsylvania, go to Penn State Extension (ento.psu.edu/outreach/extension/ipm) for public/ag resources and training, and the PA Department of Agriculture (PDA) website (pa.gov/agencies/pda/plants-land-water/plant-industry/environmental-programs/integrated-pest-management) for state guidelines and programs.

4th Annual Fun on the Farm

What is a better way to learn than to be fully immersed in the crop fields?! The 4th annual Fun on the Farm educational program series was held in October 2025 featuring **Organic Farming at Clarion River Organics** in Sligo (top four photos) and **Christmas Tree Farms at the Irish Acres Tree Farm** in Knox (bottom two photos). Seven children and twelve adults attended the series overall, many of them attending multiple of the farm visits offered. Special thanks to the farmers for opening up their farms for community education and thank you to Annah Burke, Penn State Extension 4H educator, for partnering with us on this program series again.

The Clarion Conservation District & Penn State Extension's 4H Educator have partnered together for 4 years now (2026 will be our 5th year!) to provide this educational program series for both children *and* adults in the community to learn more about local agriculture as well as conservation practices. **We need your help to continue this series!** We are looking for farms in Clarion County that implement conservation practices and don't mind showing their farm and what they do. Bonus: It helps spread the word about your business too! Please contact Hannah at 814-393-6147 or hbequeathccd@gmail.com if you are interested.



DIRT, GRAVEL, & LOW VOLUME ROAD (DGLVR) UPDATES

by Alicia Ramsey, DGLVR Technician

Awarded 2026 DGLVR Projects:

Low Volume:

- Shettler Road, Beaver Township
- Madden Drive, Knox Township
- Penn Street, Sligo Borough

Dirt & Gravel:

- Love Road, Limestone Township
- Breniman Road (Phase 2), Paint Township
- Mauthe Road, Piney Township
- Grovers Road, Porter Township
- Sandy Road (Phase 2), Washington Township

Upcoming Trainings:

PA One Call

- **April 14th: Planning Projects for Project Owners and Designers** from 12-1pm at the Clarion Township Municipal Building (17382 Route 322, Strattanville, PA). Worth 1 PDH for Professional Engineering Training. Register online at www.pa1call.org.

Burns Road Low Volume Road Project



Key Project Partners: Monroe Township, Center for Dirt and Gravel Road Studies (CDGRS), Jefferson County Conservation District

Resource Challenge: Erosion and Sediment Pollution

Project Summary and Results: CCD and Monroe Township worked together utilizing DGLVR program funds to install a constructed underdrain and two new cross pipes to redirect and break up the volume and concentration of runoff. Installation of a shallow cross pipe was demonstrated during a workshop with Jefferson and Clarion County municipalities present. Additionally, the road profile was raised and the downslope bank was graded to allow surface drainage to leave the roadway instead of traveling further down the road. About 580 linear ft. of road was improved/stabilized, reducing sediment loading in an unnamed tributary to Licking Creek (Cold Water Fishery), a tributary to the Clarion River in Clarion County, PA.

For more information on the CCD DGLVR Program, please visit our website www.clarionconservation/dglvr or contact our DGLVR Technician, Alicia Ramsey, at ramseyccd@gmail.com or call 814-221-4094 (cell), 814-393-6139 (office).



EROSION AND SEDIMENT (E&S) UPDATES

by Matt Kerr, E&S Technician

- **National Pollutant Discharge Elimination System (NPDES)**
 - Received 2 general permit submissions
 - 2 general permit approved.
- **E&S Control Plans:**
 - Received 1 new plan submissions
- **Inspections:**
 - 4+ inspections conducted.
 - I-80 Canoe Creek project focus
- **Chapter 102 Technical Assistance:**
 - Multiple pre-application meetings

District Watershed Updates

Assessments:

- **Licking Creek Watershed Assessment- Complete! The final report will be published soon.**

Abandoned Mine Drainage (AMD) Treatment System Improvements:

- **Strattanville Passive Treatment System was evaluated with Pennsylvania Trout Unlimited's Technical Assistance Program.**

Be a Smart Salter

Once you put salt down, it doesn't go away...

Salt alters the soil, harms plants, and weakens infrastructure like bridges and roads.

It gets into our streams, lakes, and rivers, putting aquatic life and human health at risk.

It only takes
1 teaspoon of salt...
...to pollute
5 gallons of water

Safe winter driving is
easy as 1-2-3

1. Wait



Wait to allow time for plowing and deicing.

2. Know



Know the current road conditions before you leave.

3. Slow



Travel slowly and use caution on the roads.

Reduce your salt use to
protect our water!

1. Shovel



Clear snow from sidewalks and driveways before it turns to ice. The more snow you remove, the less salt you'll have to use - and the more effective it will be!

2. Scatter



If you use salt, scatter it so there's space between the grains. A coffee mug of salt is enough to treat an entire 20 foot driveway!

3. Sweep



Once the salt has done its job, sweep up the extra so you can reuse it for later storms - and prevent it from washing away.

4. Switch



Salt doesn't work when the pavement temperature is 15 degrees or lower. Switch to sand or use a different deicer that works at low temperatures.



League Water Quality Monitoring Opportunities



Free Programs - No Training Required!

CREEK CRITTERS



This free App will guide you through the process of collecting and identifying macroinvertebrates. Users of all ages can automatically calculate a stream health score and submit data to the Clean Water Hub - all you need is a small net and an ice cube tray! Available in the Apple or Google Play Store.

SALT WATCH



Road salt keeps our roads safe in the winter, but too much can threaten the health of our streams and drinking water. Request a free kit to track chloride spikes throughout the winter and year-round. Also explore resources on smart salting techniques and advocacy tools for your community!

NITRATE WATCH



Nitrogen is essential for plant growth, but excess nitrates from fertilizers, manure, and sewage can get into our waterways and pose serious health problems for humans and the environment. Request a free kit to track nitrates in your streams and taps and upload your data to the Clean Water Hub!

Get Started at IWLA.org/SOS



FEATURED SPECIES: COMMON WINTERBERRY (ILEX VERTICILLATA)

by Hannah Bequeath, Education/Outreach Coordinator

General Description: Common Winterberry is a native, deciduous shrub that brings a bright pop of color and food for wildlife all year round. The shrub ranges in size from 3-12 feet tall (averaging ~8ft. tall) and is slow-growing. New, cultivated varieties have been bred to be smaller. It can spread about 8ft as well through root suckers, occasionally forming large thickets. Clusters of small, green and white flowers bloom from June-July. Its common name refers to the bright red berries that mature in fall and persist in winter months; brightening up the winter landscape. Common Winterberry has dark green leaves that are elliptical in shape and serrated, turning yellow in fall (pictured below) and eventually falling off with the berries remaining.



A harmless, beneficial relative to the more familiar pest; Tomato Hornworm.

Pawpaw sphinx moth / caterpillar

Ecology: Common Winterberry provides nectar and pollen for bees, butterflies, and other pollinators during its bloom period and abundant fruit for wildlife in late fall and winter. The berries are an important food source for over 48 species of birds, including Eastern Bluebirds, American Robins, Hermit Thrushes, White-throated Sparrows, Cedar Waxwings (pictured above), and Yellow-bellied Sapsuckers (5) during the cold months when other fruits are scarce. The dense branching offers nesting habitat and winter cover for birds and small mammals. It is a host plant for many moths, including the pawpaw sphinx moth (*Dolba hyloeus*) (pictured above) (2). Winterberry's deep root system **helps stabilize soil along streambanks and wetlands, contributing to erosion control and healthy ecosystems**. In ornamental gardens the winterberry is an excellent replacement for nonnative species like the Japanese barberry, autumn olive, linden viburnum, and wineberry.

Growing Conditions / Habitat / Range: Winterberry thrives in full sun to partial shade and moist to wet, acidic soils, naturally occurring in swamps, bogs, and along streams and pond edges. It prefers rich loam or peat-based soils but tolerates clay if drainage is consistent. While moisture-loving and a great option for **rain gardens and riparian buffer plantings**, it can also adapt to average garden soils if kept evenly moist. Best berry production occurs in full sun. Hardy and resilient, it is tolerant of heat, drought, fire, and deer browse (deer will eat berries though)-requiring little maintenance / watering. Under ideal conditions, it can be expected to live 40 years or more. It is **dioecious**, meaning there are male and female flowers on different plants. Only the female plant produces berries if it is properly cross-pollinated (requires a male selection of the same species growing nearby within ~50ft. in order to set fruit). One of our native holly species (the other being American Holly), Winterberry is common in wetlands throughout the east coast of North America, found from Canada down to Florida and as far west as Texas.

Natural History / Culture: The Iroquois used parts of the winterberry as an antiseptic and as a tea to treat nausea. Today, it is often used in floral arrangements and holiday decorations . Note: the berries are poisonous to humans for consumption (5).

"A Winterberry Sonnet" by John Grey explores how the berry's bravery teaches a lesson to "imitate a winterberry's lot," finding joy amidst bleakness.



Pictured left: Winterberry planted by the Clarion Conservation District and local scouts at the recent Canoe Creek Streambank Stabilization project site riparian planting. Read the Fall 2025 CCD Newsletter for more info on this project.

Sources:

1. Grueskin, Zoe. "11 Berry-Bearing Native Plants to Keep Birds Full and Happy." 19 March 2025. Accessed 19 December 2025. <https://www.audubon.org/magazine/11-berry-bearing-native-plants-keep-birds-full-and-happy>
2. Sulpizio, Jodi. "Rain Garden Plants: Winterberry." 4 September 2025. Accessed 19 December 2025. <https://extension.psu.edu/rain-garden-plants-winterberry>
3. "Plant and Tree Library: Winter Red Winterberry." Stauffers of Kissel Hill. (2025). Accessed 19 December 2025. https://plants.skx.com/12170005/Plant/854/Winter_Red_Winterberry/
4. "Winterberry". Chesapeake Bay Program. (2025). Accessed 19 December 2025. <https://www.chesapeakebay.net/discover/field-guide/entry/winterberry>
5. Wheeler-Dubas, Dr. Maria. "Winter's Winterberries." Phipps Conservatory: Blogs. Accessed 19 December 2025. <https://www.phippsconservatory.org/blog/detail/biopgh-blog-winters-winterberries>

2025 DISTRICT HIGHLIGHTS: THE YEAR IN REVIEW

Clarion Conservation District

**Funding Brought to the
County from Conservation
District Efforts:**
\$1,036,284

Contact Information:

Trudy Alexander, District Manager
Eugene Metcalf, Board Chairman

249 S 2nd Ave
Clarion, PA 16214
814-297-8014

www.clarionconservation.com



Thanks to the General Assembly's conservation district allocations, we were able to take these actions in 2025 to reduce pollution:

Canoe Creek Streambank Stabilization Project

Resource Challenge: Erosion & Sediment Pollution, Degradation of Aquatic Habitat

Project Summary and Results: The Clarion Conservation District (CCD) assessed and designed streambank stabilization and fish habitat structures for Canoe Creek (High Quality – Cold Water Fishery), a tributary to the Clarion River in Clarion County, PA. The project consisted of the construction of 18 fish habitat/stabilization structures, realignment of stone from an existing man-made rock stream crossing to diffuse concentrated flows and inhibit erosion, and a riparian planting. The project stabilized 375 linear ft. of stream and reduced an estimated 17,622 lbs. of sediment, 20.09 lbs. of Nitrogen, and 9.25 lbs. of Phosphorus per year.

Key Project Partners: Northwest Greenways Block Grant Program, B&W Smith Construction, Iron Furnace Chapter #288 of Trout Unlimited, scouts, Tim and Lorraine Davis, and PennWest Clarion University.



BEFORE



AFTER

Clarion County Park Abandoned Mine Drainage (AMD) Treatment System Stabilization Project

Resource Challenge: Erosion & Sediment Pollution

Project Summary and Results: CCD received a WPCAMR Quick Response Emergency Grant to address an unstabilized area upslope of the treatment system ponds at the Clarion County Park, Shippensburg, PA. Reclaiming mine spoils, channeling new raw water discharge into the treatment system, and reducing and vegetating the slope all significantly improved the efficiency and effectiveness of the overall system.

Key Project Partners: Western PA Coalition for Abandoned Mine Reclamation (WPCAMR), Hedin Environmental Consulting, and Guiste Excavating

Future Projects Made Possible by the Additional Funding:

Agriculture Conservation Assistance Program (ACAP)

Seven projects have been contracted in Clarion County since the beginning of ACAP to address erosion and sediment pollution and manure/nutrient laden runoff on agricultural operations. At least three projects are predicted to be constructed in 2026; one heavy use area (HUA), two manure storage units (MSUs)- one solid and one liquid, and a concrete push-off ramp for liquid manure in the winter.



2025 DISTRICT HIGHLIGHTS: THE YEAR IN REVIEW

Clarion Conservation District Continued...



Burns Road Low Volume Road Project

Resource Challenge: Erosion and Sediment Pollution

Project Summary and Results: CCD and Monroe Township worked together utilizing DGLVR program funds to install a constructed underdrain and two new cross pipes to redirect and break up the volume and concentration of runoff. Installation of a shallow cross pipe was demonstrated during a workshop with Jefferson and Clarion County municipalities present. Additionally, the road profile was raised and the downslope bank was graded to allow surface drainage to leave the roadway instead of traveling further down the road. About 580 linear ft. of road was improved/stabilized, reducing sediment loading in an unnamed tributary to Licking Creek (Cold Water Fishery), a tributary to the Clarion River in Clarion County, PA.

Key Project Partners: Monroe Township, Center for Dirt and Gravel Road Studies (CDGRS), Jefferson County Conservation District

Future Projects Made Possible by the Additional Funding:

Lawrence Road Stream Crossing Replacement Project

The stream crossing under Lawrence Road is undersized and causing erosion and therefore sediment pollution from the streambank and road is flowing into an unnamed tributary to Piney Creek (Cold Water Fishery), a tributary to the Clarion River in Clarion County, PA. The proposed design to replace the stream crossing and improve drainage on the roadway includes: replacing the undersized structure with a larger, bottomless structure (example photo to the right), implementing streambank stabilization and fish habitat structures up and down stream of the road crossing, and adding drainage features to the roadway in both directions. Project partners: Monroe Township, Center for Dirt and Gravel Road Studies (CDGRS), State Conservation Commission (SCC), Clarion County (match funds).



Stream Smart Workshop

Resource Challenge: Aquatic passage / habitat degradation

Project Summary and Results: CCD and Trout Unlimited held a workshop with about 30 in attendance consisting of contractors, engineers, landowners, and other professionals responsible for road-stream crossings. Participants were trained on Stream Smart practices that involve constructing culverts and bridges that maintain fish and wildlife habitat while also protecting roads and public safety. The workshop included presentations on the value of stream smart crossings, regulatory requirements, and how to create and pay for the crossings. The workshop also involved a stream table demonstration and a site visit to see the Gowdy Road stream crossing project that crosses McCauley Run in northern Clarion County.

Key Project Partners: Trout Unlimited, JHA, Washington Township, Department of Environmental Protection (DEP) Knox District Mining Office

Future Projects Made Possible by the Additional Funding:

Partnerships for Regional Invasive Species Management (PRISM) Pilot Program

Education / Outreach project underway to take place during 2026-2027.

2025-2026 DEP Environmental Education Grant:

Enhancing Climate and Water Education in Clarion County

CCD will conduct a series of seven interactive webinars and hands-on, in-person workshops that will increase knowledge on the local environment, increase awareness of climate and water resource issues, and inspire community members to take action to help mitigate these problems and protect our natural resources.



2025 DISTRICT HIGHLIGHTS: THANK YOU TO OUR PARTNERS

We would like to take a moment to recognize and thank all of the partners that have worked with us this past year!

- 
- Department of Conservation & Natural Resources (DCNR)- Cook Forest State Park, Clear Creek State Park, Clear Creek Forest District
 - USDA Natural Resource Conservation Service (USDA-NRCS)
 - Pennsylvania Association of Conservation Districts (PACD)
 - Irish Acres Tree Farm
 - Clarion River Organics
 - Nexgen Dairy at Sweet Breeze Farms
 - Henry Farms
 - Greenawalt's Beef Farm
 - Chad Smith's Beef/Livestock Farm
 - Neely Greenawalt's Livestock Farm
 - Ray Weaver's Beef Farm
 - Ganoe Farm
 - Other Local Farmers
 - HRG
 - Western PA Grazing Conference Committee
 - Penn State Extension
 - Clarion County 4H
 - Horizon Farm Credit
 - PA SBDC Ag Center for Excellence
 - Farm Service Agency (FSA)
 - Clarion-Venango-Forest County Farm Bureau
 - PASA Sustainable Agriculture
 - Foxburg Free Library
 - Clarion Free Library
 - DEP's Bureau of Abandoned Mine Reclamation (BAMR)
 - Iron Furnace Chapter #288 of Trout Unlimited
 - Trout Unlimited
 - PA Council of Trout Unlimited
 - Neighboring Conservation Districts: Jefferson, Venango, Forest
 - Pennsylvania Fish & Boat Commission (PAFBC)
 - Pennsylvania Game Commission (PGC)
 - Hedin Environmental
 - Western PA Coalition for Abandoned Mine Reclamation (WPCAMR)
 - Northwest Region & Knox Department of Environmental Protection (DEP)
 - Redbank Creek Trust
 - Western Pennsylvania Conservancy (WPC)
 - Mill Creek Coalition (MCC)
 - Coldwater Heritage Partnership
 - Foundation for Pennsylvania Watersheds
 - Meredith's Footwear
 - Family Farm & Home
 - Tim & Lorraine Davis
 - Runyan family
 - Hartle family
 - Elder family
 - Hannah family
 - Charney family
 - Clarion-Limestone School District
 - Keystone High School
 - Union High School
 - West Forest High School
 - East Forest High School
 - Clarion Area School District
 - Redbank Valley School District
 - North Clarion High School
 - Clarion Area Elementary School
 - Clarion Christian School
 - Immaculate Conception School
 - Intermediate Unit #6
 - Clarion County Forest Stewardship Committee
 - Lumber Heritage
 - Allegheny Hardwood Utilization Group (AHUG)
 - Kronospan
 - ADS Recycling
 - Local Scout groups - Pack 55, Pack 51
 - Clarion County Sportsmen for Youth
 - PA American Water
 - PennWest Clarion University professors, Dr. Andy Turner and Dr. Suzie Boyden
 - PennWest Clarion University's Bio Club
 - Keep Pennsylvania Beautiful / PennDOT
 - PA Coldwater Heritage Partnership
 - April Claus (Interactive Environmental Programs)
 - Clarion County Association of Township Officials (CCATO)
 - Center for Dirt & Gravel Road Studies (CDGRS)
 - PennDOT Municipal Services
 - LTAP/Northwest Commission
 - Beaver Township
 - Porter Township
 - Paint Township
 - Farmington Township
 - Elk Township
 - Toby Township
 - Limestone Township
 - Monroe Township
 - Millcreek Township
 - Highland Township
 - Licking Township
 - Piney Township
 - Washington Township
 - Redbank Township
 - JHA
 - Redbank Valley Municipal Park
 - LandPro
 - John Giles, Obenrader family, Wayne Ochs, Clayton Burford, Jim & Sue Reed, Mark Grover, Alice Grolemond, Irma Bell, Alan Guth, J & N Development LLC, Paul Slaughenhoup, Ervin Byler, Alan Reinford

Thank you!

2025 was a great year for conservation & we look forward to what's to come in the new year!

UPCOMING EVENTS

To register for any of the following District events, go to www.clarionconservation.com/events or use the contact info below. All starred (*) events are not District events, but we are a partner.



January

- **22nd- Noticing Nature: Winter Nature Journaling Workshop**- Join us at the CCD Office from 5-6:30pm for a relaxing evening of observing the beauty of the world around us through nature journaling! We will also go over how to use citizen science data collection tools. No experience necessary. Must be 18+ years old. Free journaling materials provided. *Register by January 20th.*
- **30th- 5th Annual Farmer's Breakfast**- More info on Ag Page. *Register by January 20th.*

February

- ***7th- Forest Landowner's Conference** -Held at the Science Building at PennWest Clarion University in Clarion, PA. Hosted by the Clarion County Forest Stewardship Committee in partnership with DCNR Bureau of Forestry, Pennsylvania Game Commission, and PennWest Clarion University. *Register by February 1st.*
- **25th - Noticing Changes in Nature: Phenology Webinar** - Join CCD & staff from the Carnegie Museum of Natural History online to learn about phenology; the study of the timing and cyclical patterns of events in the natural world such as plants budding, leaves changing, birds migrating, insects emerging, etc. *Register by Feb. 20th to receive the webinar link.*

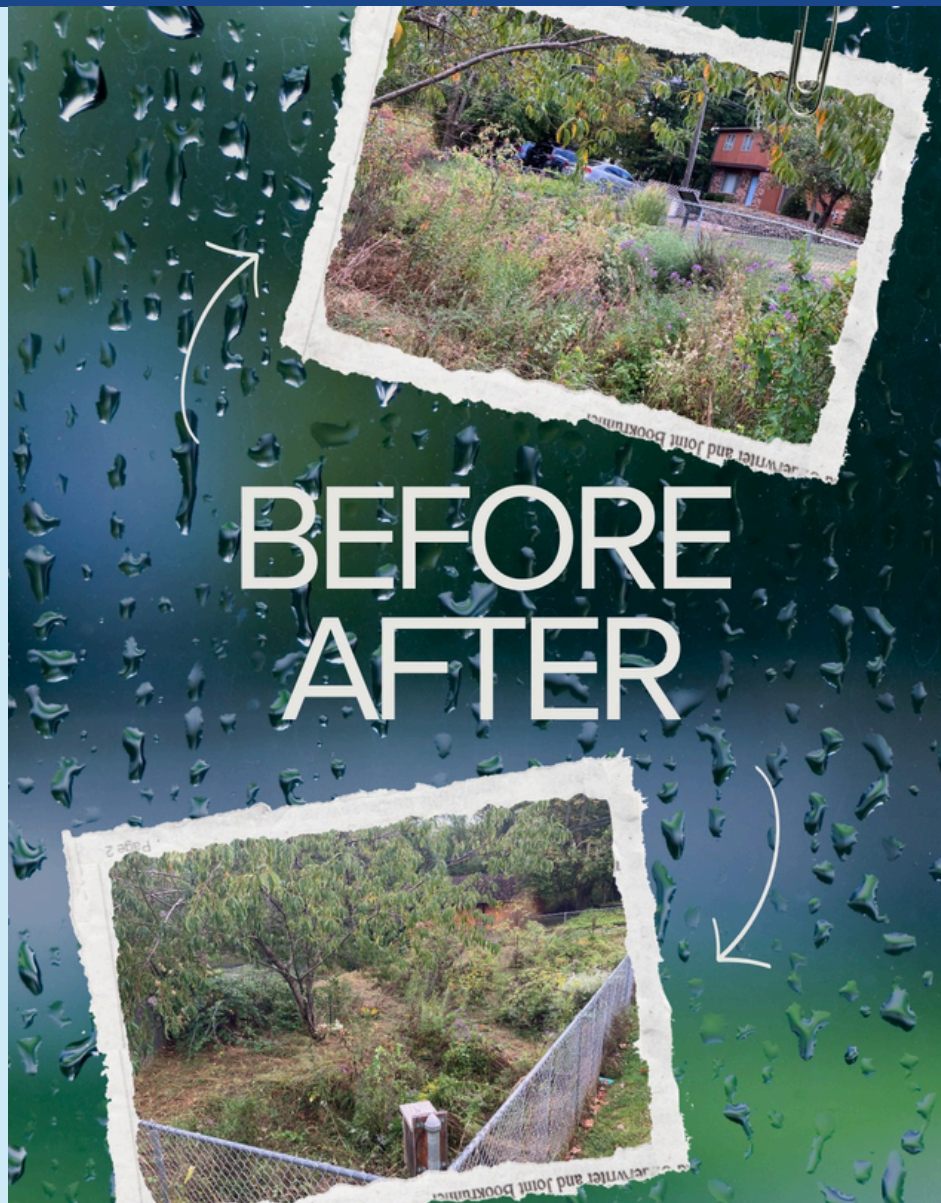
March

- **11th - Roots So Deep Documentary (Free Showing)** - At Trinity Point Church, Clarion, PA from 6:30 - 9pm. Go to westernpagrazing.com for more info!
- ***12th- The 28th Annual Western PA Grazing Conference** - Join us for the annual conference promoting sustainable grazing practices. Held at Trinity Point Church, Clarion, PA from 8:30am - 5pm. \$45 registration fee. *Register by March 5th.* Go to www.westernpagrazing.com for more info!
- **28th - Soil Health & Composting Workshop**- more details coming soon - stay tuned.
- **31st - Noticing Changes: Invasive Species** - more details coming soon - stay tuned.

For more information on our upcoming events please view our Facebook or Instagram page, our website, or contact us at hbequeathccd@gmail.com or 814-393-6147.



@conserveclarion
www.clarionconservation.com



Above: Thank you to Knox Cub Scout Pack 55, other scouts, PennWest Clarion University students, and the community members that volunteered their time to help weed the CCD office public rain gardens this fall!

**Many exciting programs/events
happening in 2026! Stay tuned!**



Nature Journaling
Phenology Webinar
Soil Health & Composting Workshop
Invasive Species Scavenger Hunt
Water Workshop
Rain Garden & Riparian Buffer Workshop
Forestry Walk



Do you know someone that is interested in receiving the Clarion Conservation District newsletters?

To subscribe or unsubscribe, please contact us at hbequeathccd@gmail.com or call 814-393-6147.